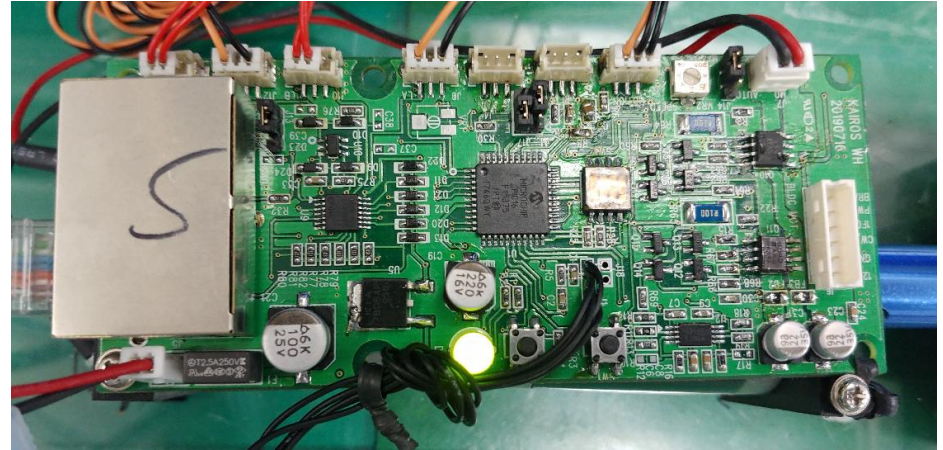


Key features :

- 자동 문 개폐장치
- DC 및 BLDC 모터 컨트롤
- RS-485 통신
- Master-Slave(8개) 연동 제어
- Rain Sensor에 의한 모터 제어 기능
- PIR Sensor를 사용한 안전 기능
- 모터 위치에 따라 속도 가/감속



Part :

- **Microchip PIC16F15375**
 - DC – 32 MHz clock input
 - Up to 28 KB Flash Program Memory / Up to 2 Bytes Data SRAM
 - 8-bit Timer2 with Hardware Limit Timer (HLT)
 - 16-bit Timer0/1
 - Four 10-Bit PWMs
 - eXtreme Low-Power (XLP) :Sleep mode: 50 nA @ 1.8V, Secondary Oscillator: 500 nA @ 32 kHz
 - Memory Access Partition (MAP) : Write protect, Customizable Partition
 - Device Information Area (DIA)
 - Device Configuration Information (DCI)
 - High-Endurance Flash (HEF)
 - Last 128 words of Program Flash Memory
 - Power-Saving Functionality : DOZE mode, IDLE mode, SLEEP mode, Peripheral Module Disable (PMD)
- **Vishay SI4542DY**
 - N- and P-Channel 30-V (D-S) MOSFET
 - Halogen-free According to IEC 61249-2-21 Definition
 - TrenchFET® Power MOSFET
 - 100 % Rg Tested